

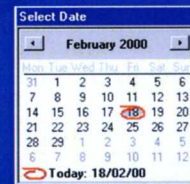
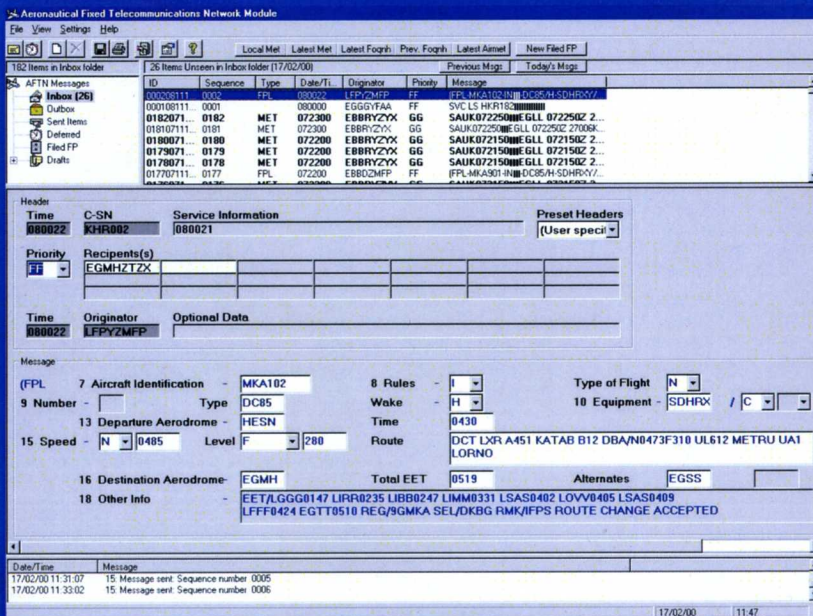
MESSENGER

Whether being used as an AMHS User Agent or an AFTN terminal, Sensei Messenger provides an operator with the same familiar and consistent interface for message transmission and reception. For smooth transition between the AFTN and AMHS, automatic conversion of AFTN addresses can be achieved through automatic X.500 directory access using the DAP protocol. A number of User Agents can be connected through a central server with incoming messages being routed to the intended recipient(s) and or printer(s), by address and/or message type. The user is alerted to a new message, which can then be viewed and/or printed as required. An audible alert for a distress message is activated on reception.

Messages are compiled in accordance with the international conventions of ICAO document Annex 10 (certified by UK NATS for compliance to those structures) and ICAO document 9705. All messages are automatically checked for compliance with ICAO AFTN and AMHS standards, alerting the user of any discrepancy prior to transmission. ICAO and IFPS flight plan messages are

fully supported (e.g. FPL, SPL, RQP, RQS, DLA, CNG, CNL, DEP, ARR), so are ADEXP format (slot) messages used by Eurocontrol (including SAM*, SRM*, SLC*, SIP*, SPA, SRJ, SRR, SMM, FLS*, FCM, REA) along with standard NOTAM and OPMET messages (such as METAR, TAF*, AIRMET, RQM, FOQNH*, SNOWTAM), plus a free format blank form (*received message only).

Other Sensei modules can also interface via the AFTN and AMHS. For instance a METAR can be automatically compiled and sent using the Meteorological Data Display and flight data received through the AFTN or AMHS and can be processed automatically to compile a Flight Movements Database with Operational Flights Display and Flight Strip Printing.



CALL US ON: +44 (0) 1977 700077

OR EMAIL US AT: info@artemiscom.co.uk
VISIT US AT: www.artemis-communications.co.uk

ARTEMIS: THE COMPLETE SOLUTION FOR AFTN, CIDIN AND AMHS COMMUNICATIONS

Form-fill message decode and quick-load plain text views, with auto screen arrange to display full message detail clearly.

```
Message
(FPL-MKA102-IN
-DC85/H-SDHRXY/C
-HESN0430
-N0485F280 DCT LXR A451 KATAB B12 DBA/N0473F310 UL612 METRU UA1 LORNO
UZ904 EMILY UZ905 VIC UL613 TALED UZ613 HOC UL613 SANDY DCT
-EGMH0519 EGSS
```

Programmable hot-keys select new message type (e.g. F5 = FPL, F6 = RQM).

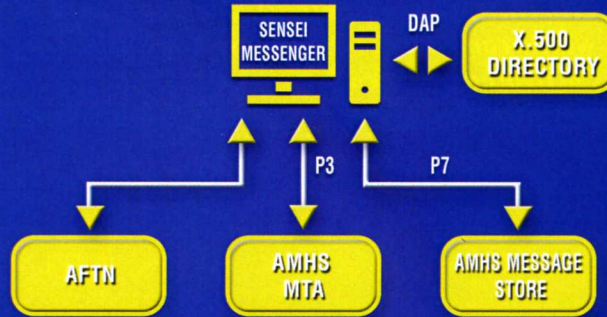


Channel configuration

Message templates of user defined standard messages (and partial messages), header details and addressee lists.

Automatic sequence numbering, originator and date/time entry etc., special characters (hyphens, space characters, brackets, etc.) are also inserted automatically.

Word processing tools include cut/copy-and-paste, word-wrap to multiple lines and tab between fields. On-line help, tool tips, default data entry and drop-down/pop-up selection boxes reduce errors.



Sensei Messenger AFTN/AMHS user agent

KEY FEATURES

- Easy to use AFTN/AMHS terminal software for time saving message preparation
- X.500 Directory access for address translation and lookup
- Simple e-mail style user interface with easily configurable folders for more efficient message organisation
- Full AFTN and AMHS access at each workstation using a single AFTN/AMHS connection and standard PC hardware

